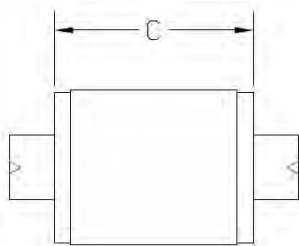


Custom Master Setting Discs from .1500" to 8.0100"

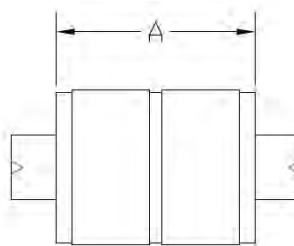
| Range | Tolerance Class | Price Style 1 | Price Style 2 | Price Style 3 |
|--|-----------------|---------------|---------------|---------------|
| 5.0101" to 5.5100" 127.76mm to 139.95mm [14] | XX | \$450.00 | \$560.00 | \$310.00 |
| | X | \$405.00 | \$505.00 | \$270.00 |
| | Y | \$385.00 | \$465.00 | \$245.00 |
| 5.5101" to 6.0100" 139.96mm to 152.65mm [15] | XX | \$455.00 | \$610.00 | \$315.00 |
| | X | \$410.00 | \$540.00 | \$275.00 |
| | Y | \$390.00 | \$495.00 | \$255.00 |
| 6.0101" to 6.5100" 152.66mm to 165.35mm [16] | XX | \$480.00 | \$660.00 | \$345.00 |
| | X | \$430.00 | \$575.00 | \$280.00 |
| | Y | \$410.00 | \$540.00 | \$265.00 |
| 6.5101" to 7.0100" 165.36mm to 178.05mm [17] | XX | \$750.00 | \$830.00 | \$445.00 |
| | X | \$645.00 | \$740.00 | \$375.00 |
| | Y | \$605.00 | \$700.00 | \$360.00 |
| 7.0101" to 7.5100" 178.06mm to 190.75mm [18] | XX | \$760.00 | \$855.00 | \$450.00 |
| | X | \$675.00 | \$770.00 | \$400.00 |
| | Y | \$630.00 | \$725.00 | \$375.00 |
| 7.5101" to 8.0100" 190.76mm to 203.45mm [19] | XX | \$800.00 | \$885.00 | \$455.00 |
| | X | \$670.00 | \$755.00 | \$385.00 |
| | Y | \$670.00 | \$755.00 | \$385.00 |

Chrome Plated Tool Steel - Add 50% to Steel price.

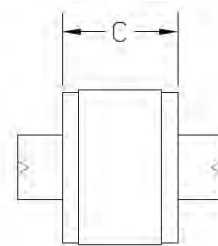
| Range | | Grip No. | C Style 1 | A Style 2 | C Style 3 |
|--------------------|---------------------|----------|-----------|-----------|-----------|
| Inch | Metric | | | | |
| .1500" to .2300" | 3.81mm to 5.84mm | 0 | 1 3/16" | 1 3/16" | 3/4" |
| .2301" to .3650" | 5.85mm to 9.27mm | 1 | 1 5/16" | 1 5/16" | 13/16" |
| .3651" to .5100" | 9.28mm to 12.95mm | 2 | 1 7/16" | 1 7/16" | 7/8" |
| .5101" to .8250" | 12.96mm to 20.95mm | 3 | 1 9/16" | 1 9/16" | 15/16" |
| .8251" to 1.1350" | 20.96mm to 28.83mm | 4 | 1 11/16" | 1 11/16" | 1" |
| 1.1351" to 1.5100" | 28.84mm to 38.35mm | 5 | 1 15/16" | 1 15/16" | 1 1/8" |
| 1.5101" to 2.0100" | 38.36mm to 51.05mm | 6 | 1 7/8" | 7/8" | 7/8" |
| 2.0101" to 2.5100" | 51.06mm to 63.75mm | 6 | 2" | 7/8" | 7/8" |
| 2.5101" to 3.5100" | 63.76mm to 89.15mm | 7 | 2" | 1" | 1" |
| 3.5101" to 8.0100" | 89.16mm to 203.45mm | 7 | 2 1/8" | 1" | 1" |



STYLE 1



STYLE 2



STYLE 3

Standard Flexible Hole Location Gages

Hole Location Plugs are used to measure the location of a threaded hole in a product, typically with a CMM.

Vermont Gage's Flexible Hole Location Plugs larger than #10 (M5) are slotted at 90 degree increments, while Hole Location Plugs #10 (M5) and smaller are of solid construction with front taper covering the entire product tolerance. Both styles insure positive location on the thread flank regardless of the size of the hole within the product tolerance.

- *For inspecting the location of a threaded hole*
- *Slotted 90 degree design locates positively on flank of parts hole*
- *Sizes #10 (M5) and smaller are of solid construction, with front taper to cover entire product tolerance*
- *Use to determine centerline to centerline distances of threaded holes*
- *Certificate of Accuracy included*

INCH

| Size | Order No. | Price |
|-------------|-----------|----------|
| 0-80 UNF | 261101000 | \$134.00 |
| 1-64 UNC | 261102500 | \$130.00 |
| 1-72 UNF | 261103500 | \$130.00 |
| 2-56 UNC | 261105000 | \$125.00 |
| 2-64 UNF | 261106000 | \$125.00 |
| 3-48 UNC | 261107500 | \$118.00 |
| 3-56 UNF | 261108500 | \$118.00 |
| 4-40 UNC | 261110000 | \$112.00 |
| 4-48 UNF | 261111000 | \$112.00 |
| 5-40 UNC | 261112500 | \$106.00 |
| 5-44 UNF | 261113500 | \$106.00 |
| 6-32 UNC | 261115000 | \$106.00 |
| 6-40 UNF | 261116000 | \$106.00 |
| 8-32 UNC | 261117500 | \$106.00 |
| 8-36 UNF | 261118500 | \$106.00 |
| 10-24 UNC | 261120000 | \$106.00 |
| 10-32 UNF | 261121000 | \$106.00 |
| 12-24 UNC | 261122500 | \$98.00 |
| 12-28 UNF | 261123500 | \$98.00 |
| 1/4-20 UNC | 261126000 | \$90.00 |
| 1/4-28 UNF | 261127000 | \$90.00 |
| 5/16-18 UNC | 261129500 | \$95.00 |
| 5/16-24 UNF | 261130500 | \$95.00 |
| 3/8-16 UNC | 261133000 | \$95.00 |
| 3/8-24 UNF | 261134000 | \$95.00 |
| 7/16-14 UNC | 261136500 | \$95.00 |
| 7/16-20 UNF | 261137500 | \$95.00 |
| 1/2-13 UNC | 261140000 | \$106.00 |
| 1/2-20 UNF | 261141000 | \$106.00 |
| 9/16-12 UNC | 261143500 | \$108.00 |
| 9/16-18 UNF | 261144500 | \$108.00 |
| 5/8-11 UNC | 261147000 | \$112.00 |
| 5/8-18 UNF | 261148000 | \$112.00 |
| 3/4-10 UNC | 261152000 | \$116.00 |
| 3/4-16 UNF | 261153000 | \$116.00 |
| 7/8-9 UNC | 261157000 | \$130.00 |
| 7/8-14 UNF | 261158000 | \$130.00 |
| 1"-8 UNC | 261162000 | \$180.00 |
| 1"-12 UNF | 261163000 | \$180.00 |

METRIC

| Size | Order No. | Price |
|--------------|-----------|----------|
| M1.6 X 0.35 | 262101000 | \$152.00 |
| M2.0 X 0.4 | 262104000 | \$148.00 |
| M2.5 X 0.45 | 262107000 | \$148.00 |
| M3.0 X 0.5 | 262108500 | \$135.00 |
| M3.5 X 0.6 | 262110000 | \$135.00 |
| M4.0 X 0.7 | 262111500 | \$128.00 |
| M5.0 X 0.8 | 262114500 | \$128.00 |
| M6.0 X 1.0 | 262117500 | \$105.00 |
| M8.0 X 1.25 | 262120500 | \$105.00 |
| M8.0 X 1.0 | 262120000 | \$105.00 |
| M10.0 X 1.5 | 262125500 | \$115.00 |
| M10.0 X 1.25 | 262124500 | \$115.00 |
| M10.0 X 0.75 | 262123500 | \$135.00 |
| M12.0 X 1.75 | 262130500 | \$120.00 |
| M12.0 X 1.5 | 262129500 | \$120.00 |
| M12.0 X 1.25 | 262128500 | \$120.00 |
| M12.0 X 1.0 | 262128000 | \$125.00 |
| M14.0 X 2.0 | 262133000 | \$130.00 |
| M14.0 X 1.5 | 262132000 | \$130.00 |
| M15.0 X 1.0 | 262134500 | \$130.00 |
| M16.0 X 2.0 | 262138000 | \$130.00 |
| M16.0 X 1.5 | 262137000 | \$130.00 |
| M17.0 X 1.0 | 262139500 | \$135.00 |
| M18.0 X 1.5 | 262142000 | \$135.00 |
| M20.0 X 2.5 | 262146500 | \$135.00 |
| M20.0 X 1.5 | 262145500 | \$135.00 |
| M20.0 X 1.0 | 262144500 | \$145.00 |
| M22.0 X 2.5 | 262149000 | \$150.00 |
| M22.0 X 1.5 | 262148000 | \$150.00 |
| M24.0 X 3.0 | 262151500 | \$170.00 |
| M24.0 X 2.0 | 262150500 | \$170.00 |



THREADS